

Common questions and answers

Doesn't electricity cost the same day or night?

No. Although consumers traditionally have paid a flat retail price for electricity, the wholesale price utilities pay for that energy varies from hour to hour. Electricity usually costs much more during the times of day when overall public demand for power is high.

How will I know if I'm using electricity more efficiently?

Just save your Time of Use electric bills and see if your Off-Peak electricity usage changes over time, and your On-Peak usage goes down. If you find you're using more kilowatt hours during the low-demand, low-cost times of day, then you're being a savvy consumer.

How can I shift my energy usage?

There are several ways to shift energy usage, and they depend on individual factors, such as how many people live in your household, how you heat your home, how your hot water is generated, how much energy you use to begin with, and your individual energy usage patterns. On our Web site, you will find helpful information such as a list of energy usage by common household appliances, and our interactive Time of Use calculator, which can help you estimate the effect of Time of Use pricing on your monthly electric bill.

For more information on Time of Use, please visit www.PortlandGeneral.com/TimeOfUse

Time period	Hours of the day	Days of the week
Summer months — begins May 1 of each year		
On-Peak	3 – 8 p.m.	Monday-Friday
Mid-Peak	6 a.m. – 3 p.m. 8 – 10 p.m.	Monday-Friday
	6 a.m. – 10 p.m.	Saturday
Off-Peak	10 p.m. – 6 a.m. 6 a.m. – 10 p.m.	Every day Sunday and specified holidays*
Winter months — begins Nov. 1 each year		
On-Peak	6 – 10 a.m. 5 – 8 p.m.	Monday-Friday
Mid-Peak	10 a.m. – 5 p.m. 8 – 10 p.m. 6 a.m. – 10 p.m.	Monday-Friday Saturday
Off-Peak	10 p.m. – 6 a.m. 6 a.m. – 10 p.m.	Every day Sunday and specified holidays*

*Holidays are New Year's Day (January 1), Memorial Day (last Monday in May), Independence Day (July 4), Labor Day (first Monday in September), Thanksgiving Day (fourth Thursday in November), and Christmas Day (December 25).



Portland General Electric

121 S.W. Salmon Street • Portland, Oregon 97204
PortlandGeneral.com

Printed on recycled paper. Please recycle. ♻️

How to read your Time of Use meter



Portland General Electric

PGE #01579 04/02 1M

Reading your meter can help you manage your energy costs

There are two ways you can monitor your energy usage on the Time of Use program. One, just save your monthly Portland General Electric bill statements, which reflect the readings made by PGE meter readers. Two, read your time of use meter by following the instructions in this brochure.

Understanding information displayed on your Time of Use meter.

Time of Use meters do not have mechanical dial registers like traditional meters. Although there are a few different models of Time of Use meters, all have a rectangular digital display screen located on the meter face.

- As you observe the display screen, you will see two sections of information – a number or letter on the left side, and corresponding data on the right. The information on this screen will scroll continuously.
- Let the meter cycle through until the screen shows a series of number eights (888). This is simply a visual test for the readability of the screen. You may have to wait a few seconds, letting the display scroll until you reach this screen. The information displayed then follows in the order shown on the chart on the next panel.
- The meter never resets, but begins recording from the moment it is installed until the moment it is taken out. Therefore, you do need to record the data on the screen, including the date of your reading, if you want to track your usage for a certain time period.

CODE	DATA
888	LCD Test. Visual test for readability of display; will display a series of eights.
1 or 01	Date Display
2 or 02	Time of Day (military time, e.g., 1300 = 1 p.m.)

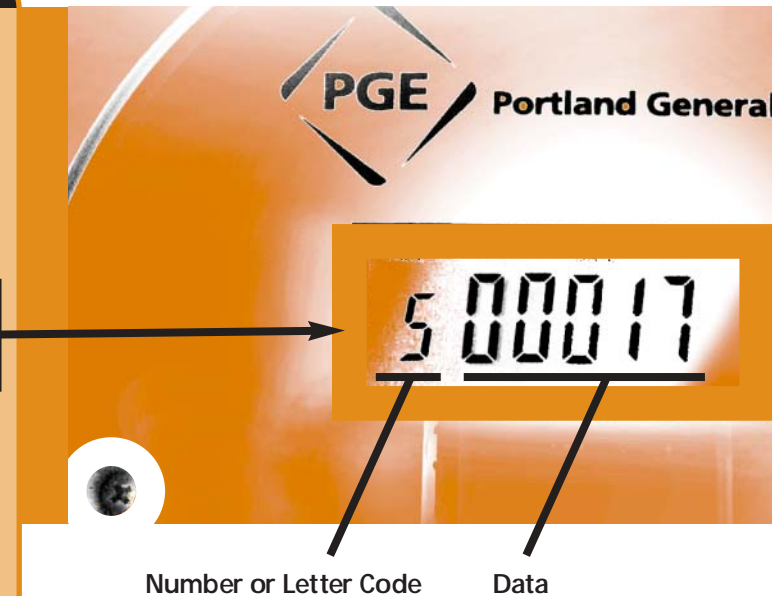
The next four displays in the series show kilowatt hour (kWh) usage. The code on the left indicates the usage period. The kilowatt hours displayed on the right changes as you use energy for that time period.

5 or 05	On-Peak kWh usage since the meter was installed
7 or 07	Mid-Peak kWh usage since the meter was installed
9 or 09	Off-Peak kWh usage since the meter was installed
P or 13	Total kWh usage (total of On-Peak, Mid-Peak and Off-Peak since the day the meter was installed)

How to record your usage.

At first, you may want to take periodic readings (once a week or once every two weeks) to determine how much energy you are using during that time. This requires simple steps each time you read your meter:

- Write down the numbers from your meter for each time period, and note the date.
- Then, on your next reading, subtract the previous numbers from your current reading to obtain your kilowatt hour usage for that time period.
- Continue to write down the date and usage information each time you read your meter, and you will have a record of how your lifestyle affects your energy use patterns over time.



The bottom line.

The key to making Time of Use work for you is to shift significant energy use from On-Peak to Mid or Off-Peak time periods. When reading your meter, this means having more kilowatt hours showing for the 9/09 Off-Peak or 7/07 Mid-Peak displays than you do for the 5/05 On-Peak. If you are finding that your energy usage patterns are not affecting your monthly bill as you would like, try shifting more energy use to Mid or Off-Peak periods.

Keeping the area around your meter safe from hazards, and clear of plants or debris helps to ensure your meter can be read by PGE.

Portland General Electric