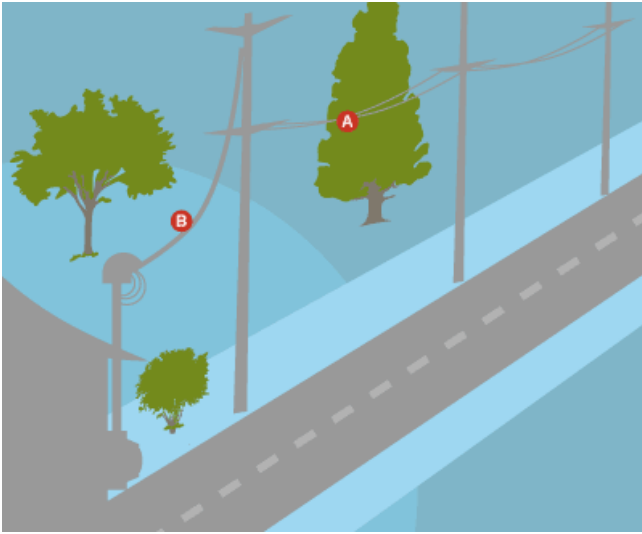


Tree Pruning & Removal

Every tree and situation is different and PGE can help you assess your circumstances. Keep in mind, though, that tree-pruning can be dangerous. We recommend that you contact a qualified arborist who is specially trained to do the job correctly and safely.



Take a look outside

It helps to gather a little information before you call us. First, survey the area around the tree carefully.

- Are there any overhead power lines running through the branches or close to the tree (within 10 feet)?
- If there is a power line in or near the tree, is it running from:
 - (A) one utility pole to another or
 - (B) a utility pole to a house?

Once you have taken a look please contact us so we can discuss solutions.

Above all, remember to always avoid contact with power lines.

More information

Cutting trees, severe pruning, or tree removal is restricted within many cities. See the rules in your city and submit appropriate permits or hire a qualified arborist.

Hiring a qualified arborist

Pruning a tree can be dangerous work, especially when there are power lines close by. That's why PGE encourages you to hire a qualified arborist.

Well-trained arborists know how to prune trees for healthy growth. They can also spot disease and insect problems.

If you hire someone to prune your trees, make sure they are licensed and bonded, and ask if they have special training required to work on trees near utility lines.

More information

Cutting trees and severe pruning is restricted within most cities and requires a permit. See your city's website for rules on pruning or removing a tree.

Need to dispose of tree limbs and debris? Metro has two solid waste transfer stations that take yard waste. See the Metro website for locations, hours and fees. Oregonmetro.gov